



How is COVID-19 impacting urban mobility and modes?

Nikola Medimorec - Data and Research Analysis, SLOCAT Secretariat

TUMI TV - 26 May 2020

SLOCAT's activities on COVID-19



Resource hub: Data, articles, webinars, messages from transport community actors

Send us any entries to post!

<https://slocat.net/covid-19-and-the-sustainable-transport-community/>

Fireside Chat: Lessons learnt and outlooks for sustainable, low carbon transport

<https://www.youtube.com/watch?v=x4KLfwyUil>



Launching soon! The Morning Commute Blog

Reflections directly from our partners across all modes and sectors

Stimulus packages tracker

Ongoing as internal tool so far - Contact us if you would like to explore collaboration





Impact of COVID-19 on Mobility

Analysis of global trends

Please find the complete analysis here: slocat.net/covid-19-impact-mobility/

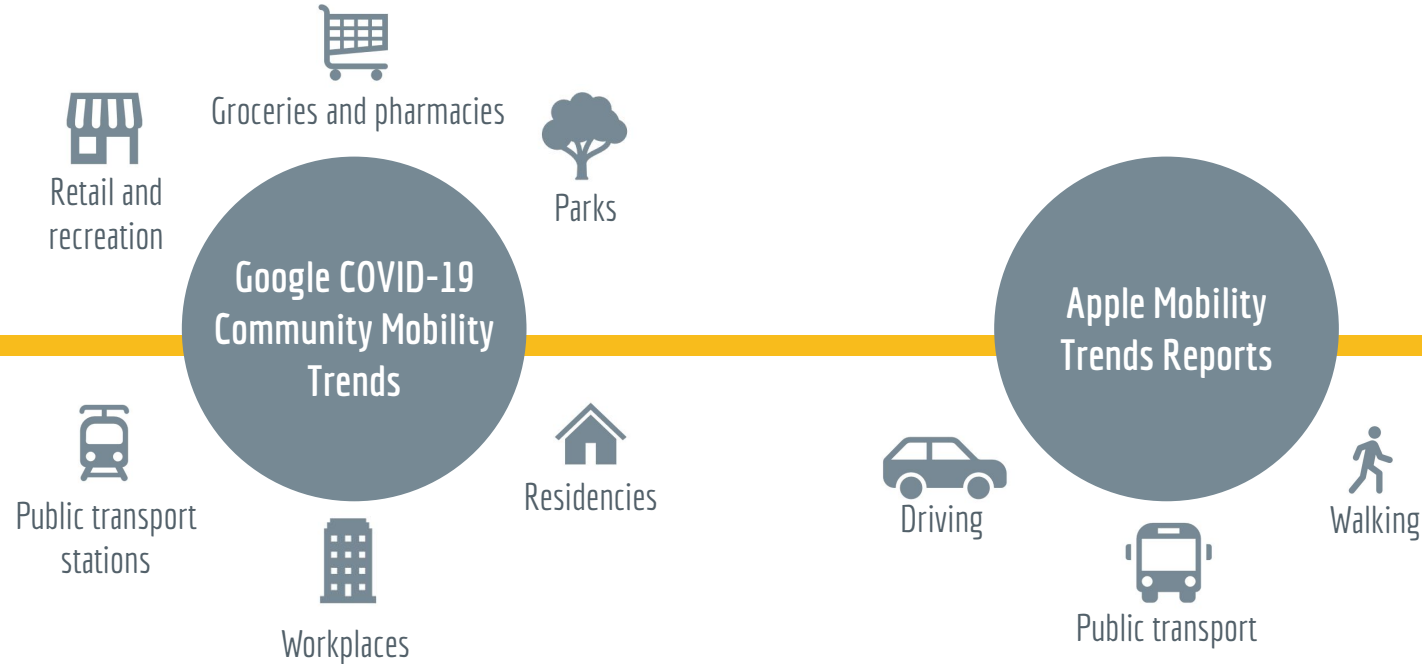


Rapid reduction of movement

Less public transport usage

Only essential trips

Data used for analysis



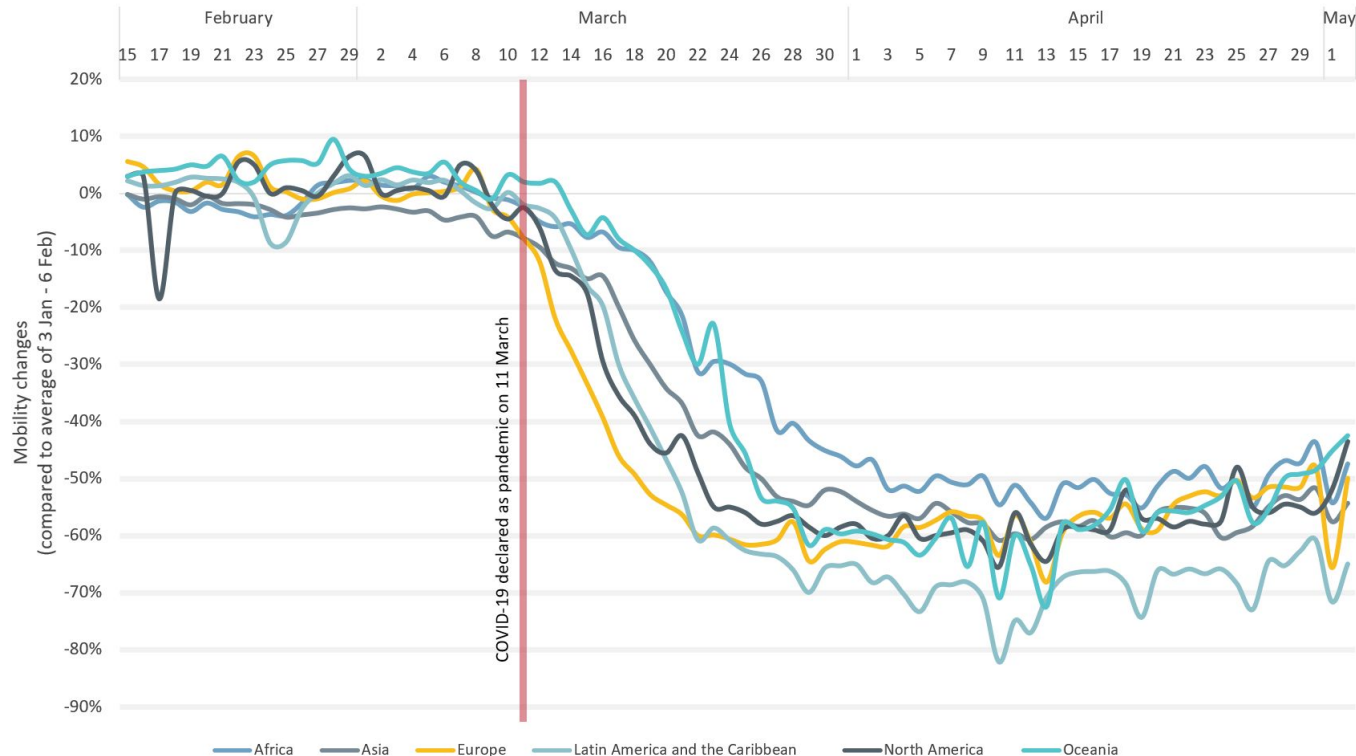
google.com/covid19/mobility/

apple.com/covid19/mobility/



Mobility to major destinations reduced by 50% and more

Mobility to public transport stations by regions:

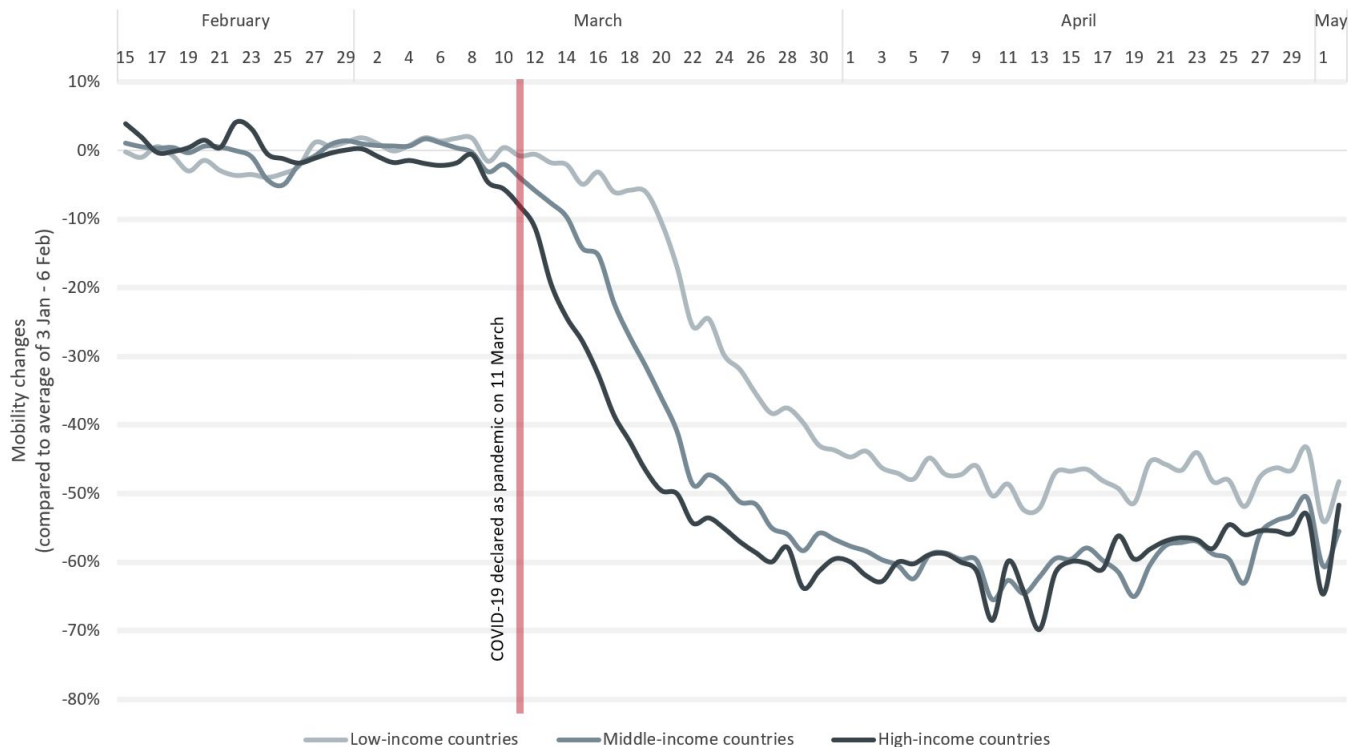


Source: SLOCAT Analysis based on Google, 2020, COVID-19 Community Mobility Reports, <https://www.google.com/covid19/mobility/>



High-income countries see largest mobility reductions

Mobility to public transport stations by income groups:



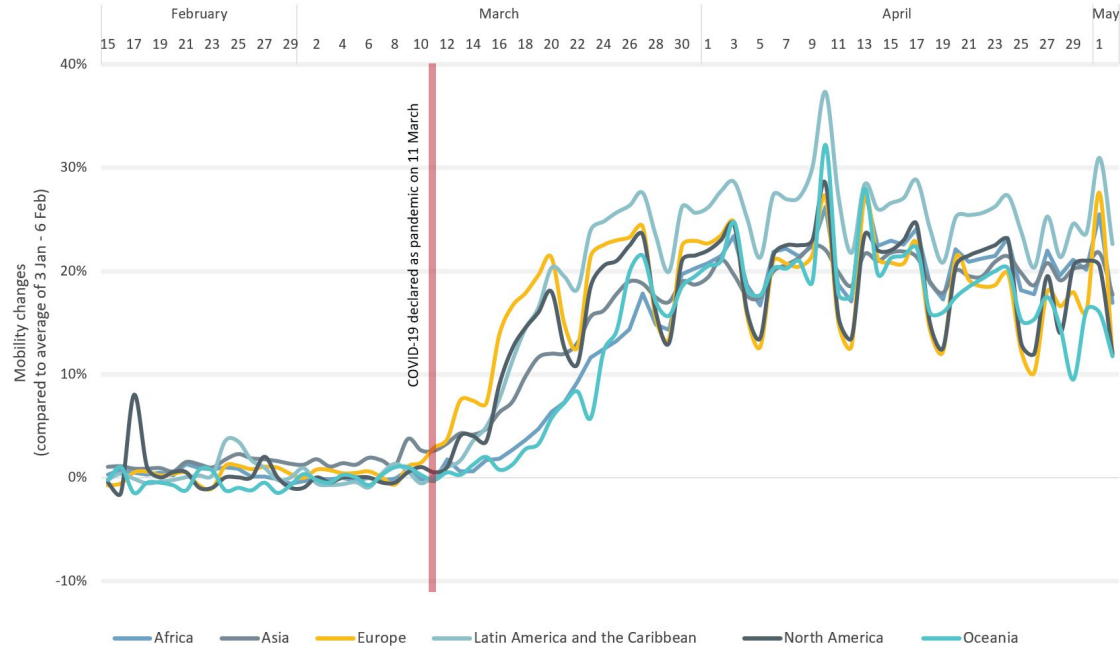
Source: SLOCAT Analysis based on Google, 2020, COVID-19 Community Mobility Reports, <https://www.google.com/covid19/mobility/>





Stay at home

Residencies' mobility:

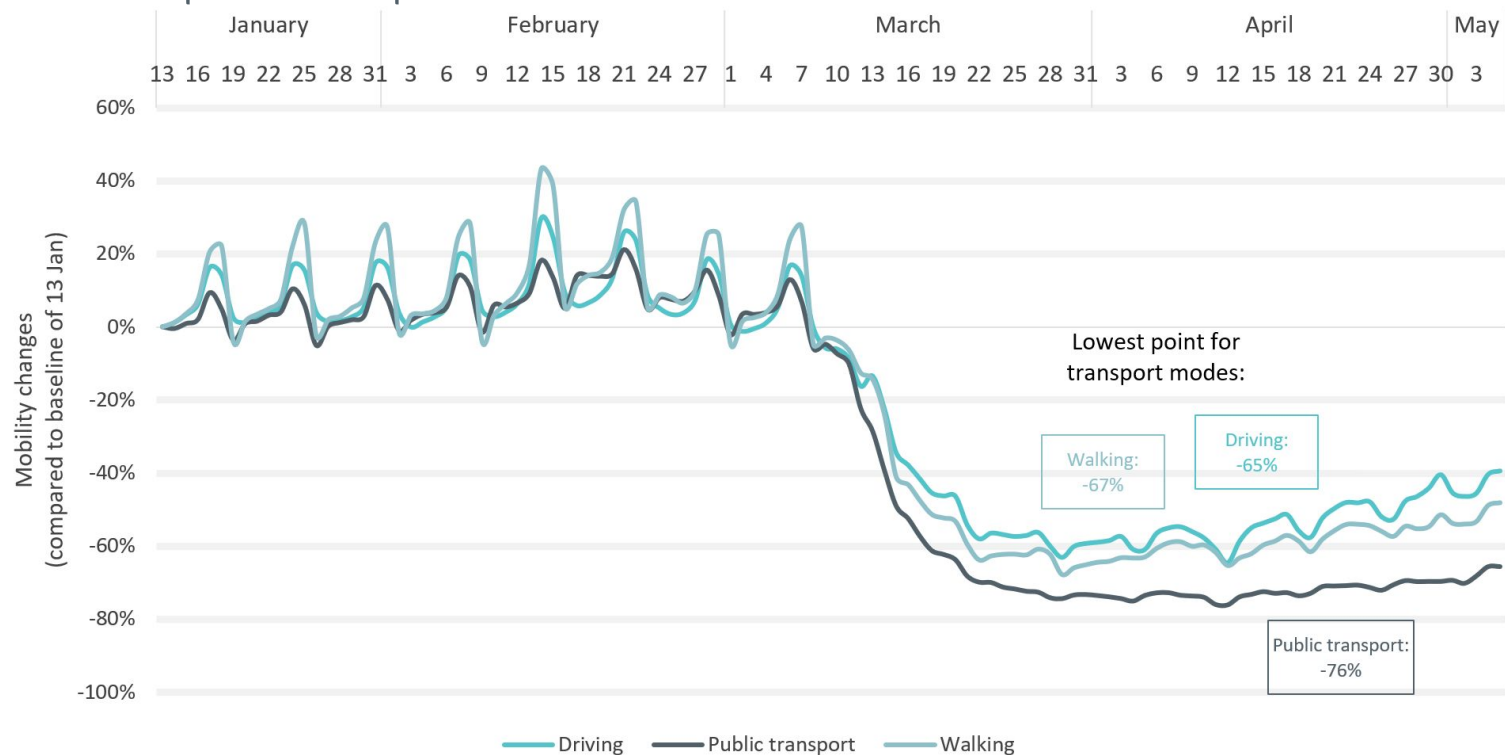


Source: SLOCAT Analysis based on Google, 2020, COVID-19 Community Mobility Reports, <https://www.google.com/covid19/mobility/>



Public transport suffers more than driving and walking

Changes in transport mode queries



Changes in public transport queries (compared to baseline of 13 January)



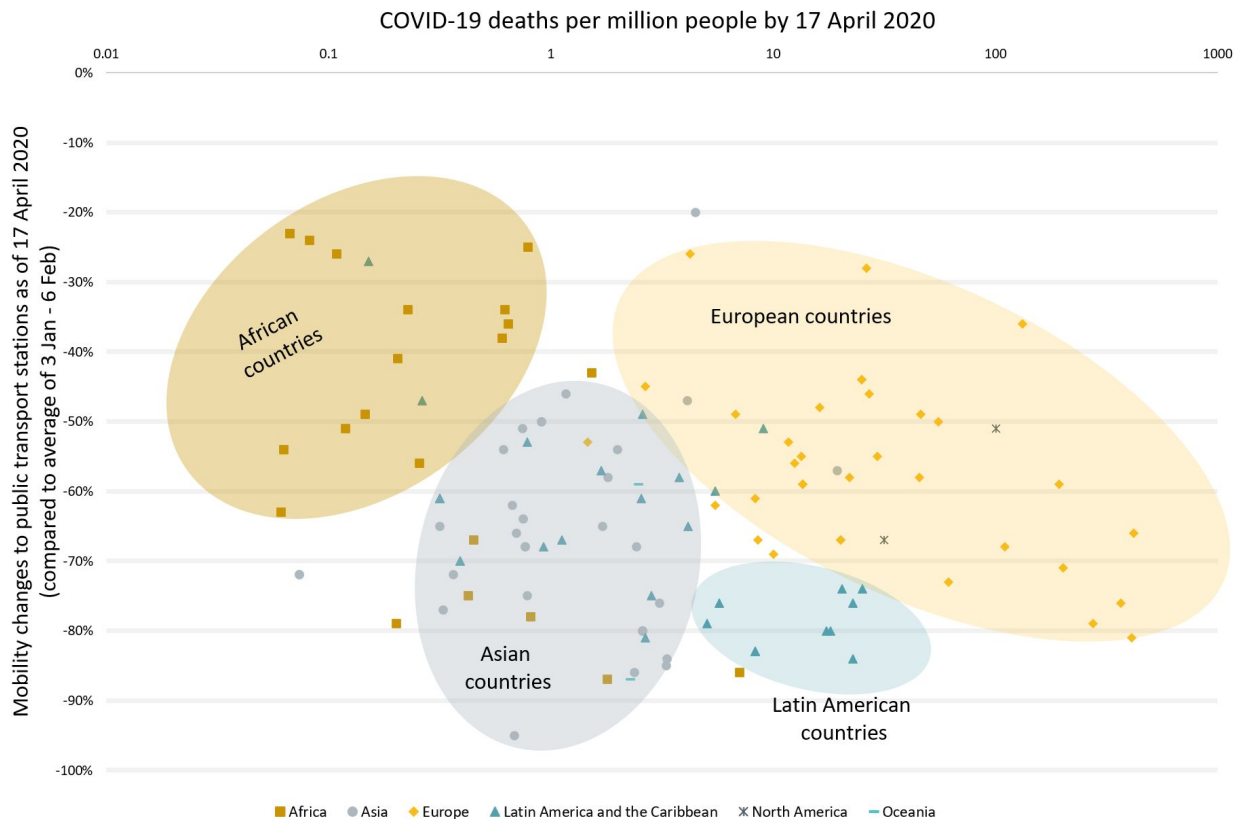
Changes in public transport queries (compared to baseline of 13 January)



Conclusions

COVID-19 Fatalities and Mobility

Plotting public transport station mobility and COVID-19 deaths



Outstanding questions



What are the long-term consequences for sustainable transport

from overall decarbonisation goals, to impact on modes of stimulus packages or legacy of short-term solutions

?



Did transport emissions reduce as well

for all modes and all regions, passenger and freight, in cities and rural areas, are they going to bounce back or not?

?



What are the impacts on logistics and delivery

and are supply chains going to change permanently, how are stimulus plans going to address global freight

?



Will some of the implemented short-term solutions be maintained

and will be sustainable, resilient transport solutions mainstreamed

?



Partnership on Sustainable,
Low Carbon Transport



nikola.medimorec@slocatpartnership.org



www.slocat.net



@slocatofficial



Please find the complete analysis here:
www.slocat.net/covid-19-impact-mobility/



@ni_medi