



Transport NAMA Indonesia

Sustainable Urban Transport Programme

Wendy Aritenang

Ministry of Transportation Indonesia

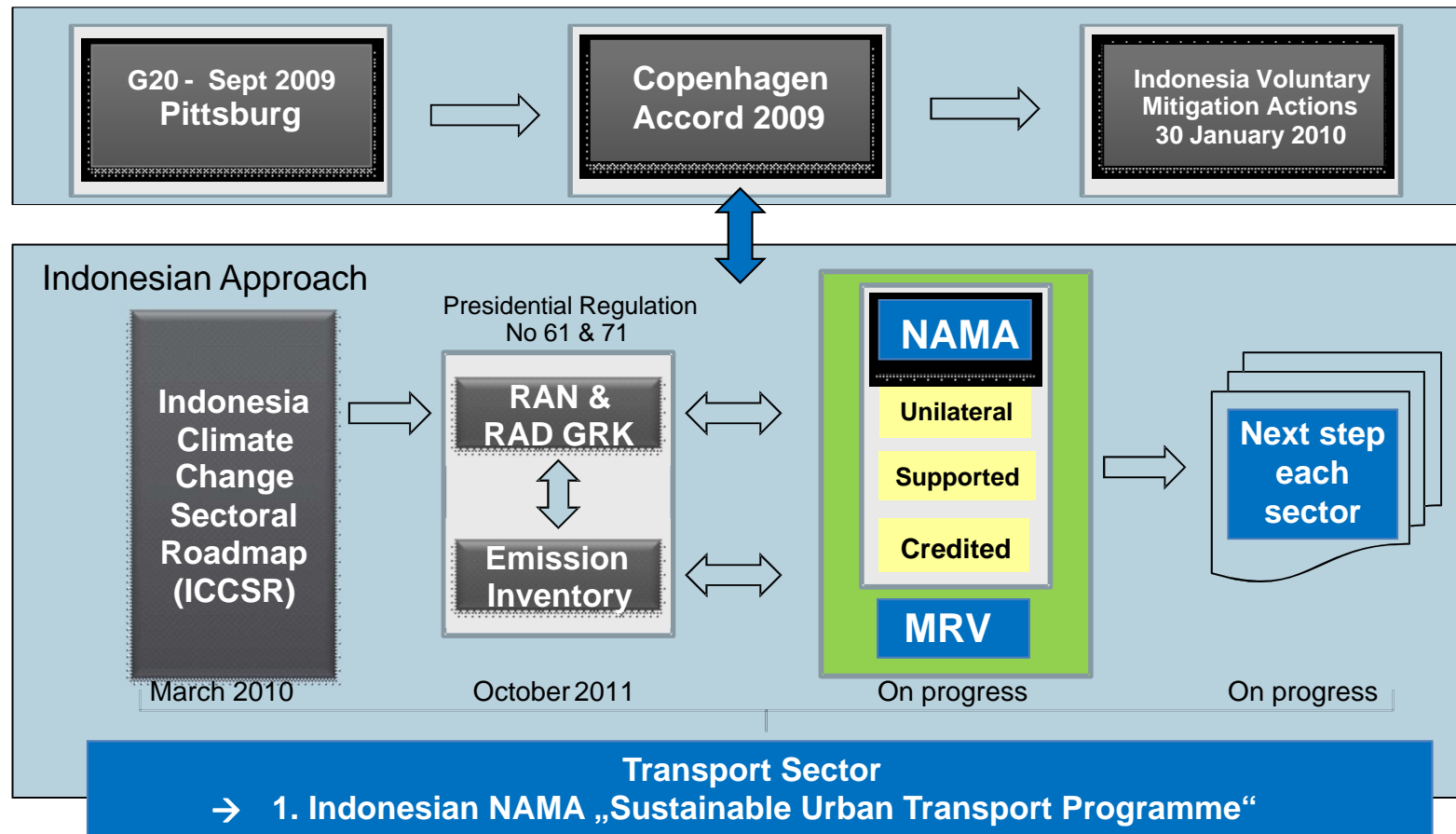
Bridging the gap

Pathways for Transport in the Post 2012 Process



Partnership on Sustainable
Low Carbon Transport

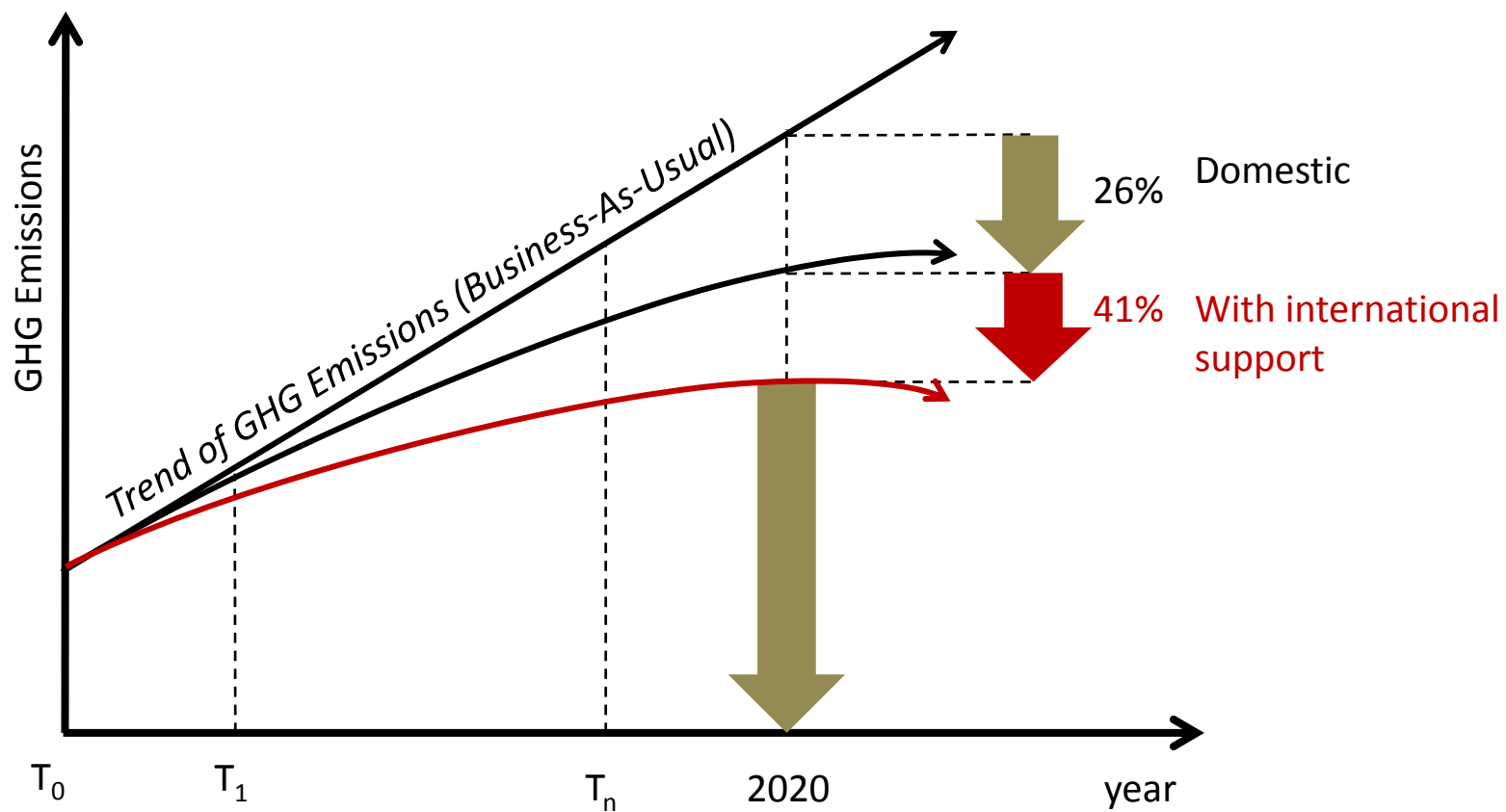
Framework of NAMAs in Indonesia



Transport Day
2013 - Warsaw



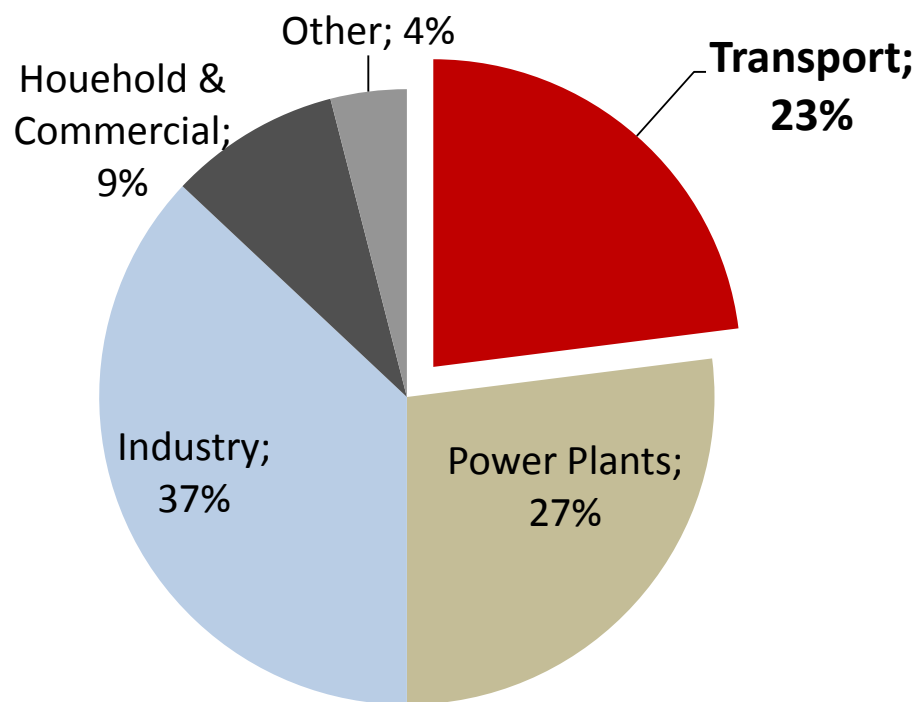
Indonesia's CO₂ Emission Reduction Targets



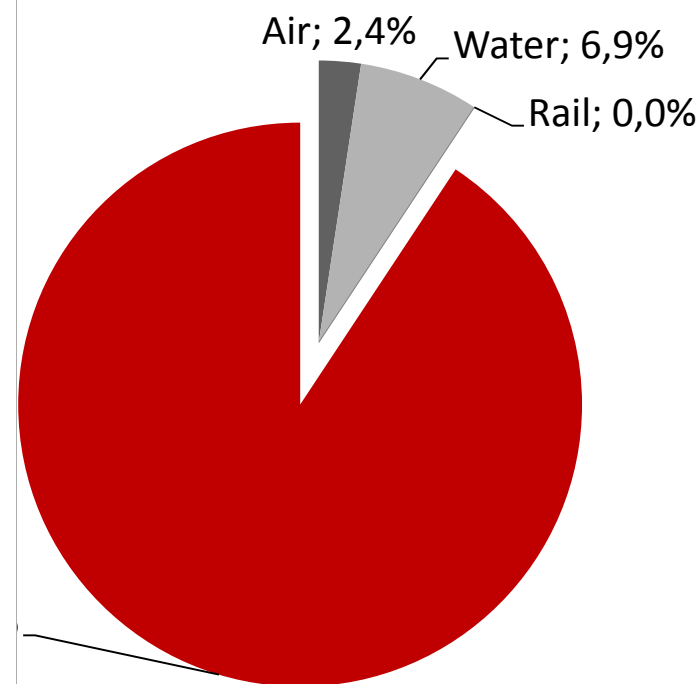


Emissions in the Transport Sector

CO₂ Emissions from Energy Sector 2005



Modal Mix in terms of Energy Consumption 2005



Source: Modified from ICCSR, 2010

Process of NAMA Development

1. Establishment of a Working Group on Transport & Climate Change
2. Selecting Pilot Supported NAMA
3. Development of NAMA Concept Note
4. Selection of Pilot Cities
5. Registration of NAMA SUTRI at UNFCCC Registry in (11/2012)
6. Further Elaboration of NAMA Concept
7. Submission of proposal to the NAMA Facility (09/2013)



Concept of NAMA SUTRI

Objectives: Overcoming Barriers at national and local level;
Implementation and monitoring of demonstration projects

1. Developing a Structure at National Level that Supports Local Governments in development, implementation and monitoring of Improve Sustainable Urban Transport Projects

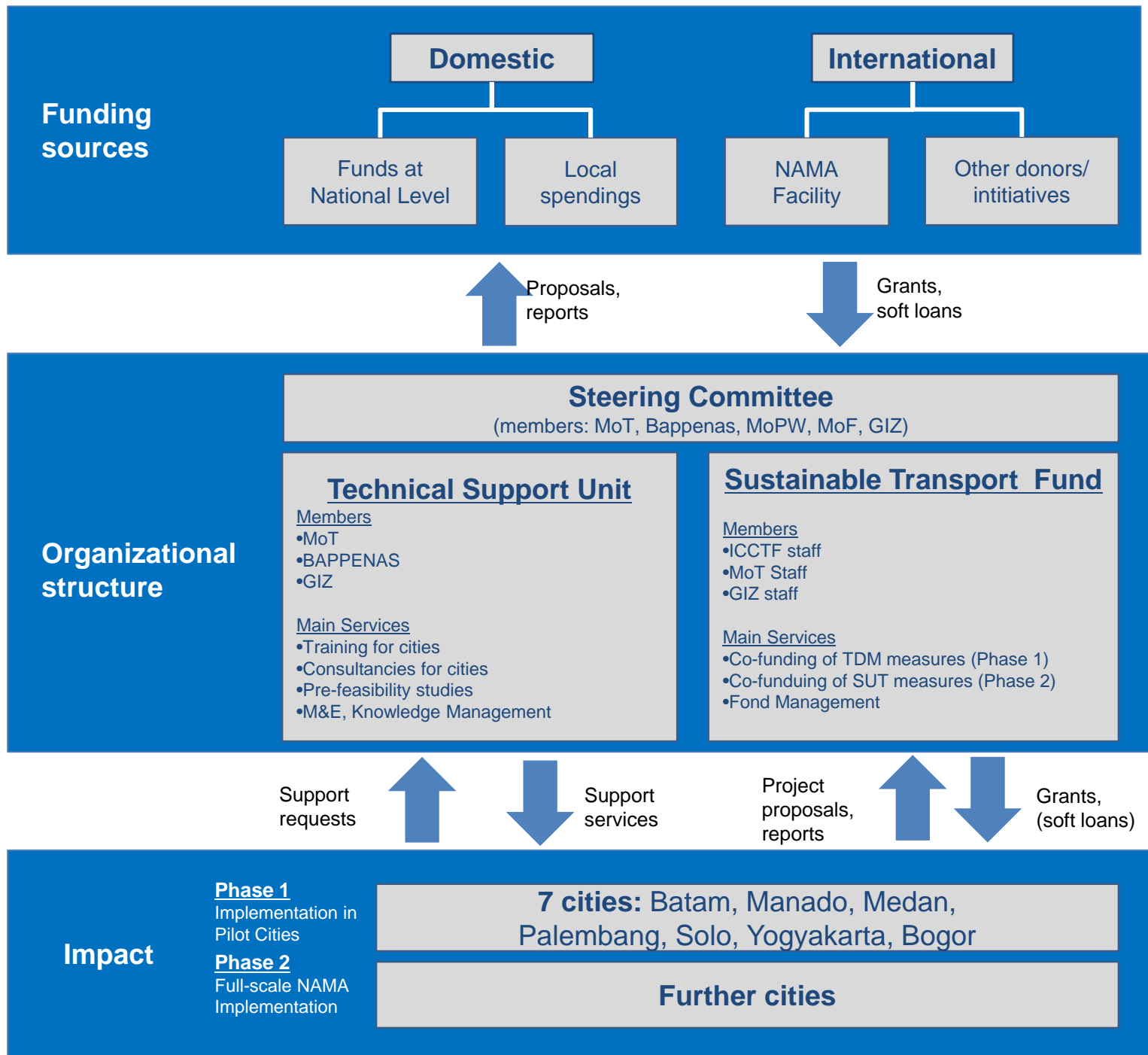
- Technical Assistance via Technical Support Unit:
 - Training for cities
 - Consultancies for cities
 - Pre-feasibility studies
 - Monitoring and Evaluation, Knowledge Management
- Co-Funding of measures via Sustainable Urban Transport Fund:
 - Transport Demand Management
 - Public Transport Improvement

2. Implementation of Mitigation Actions



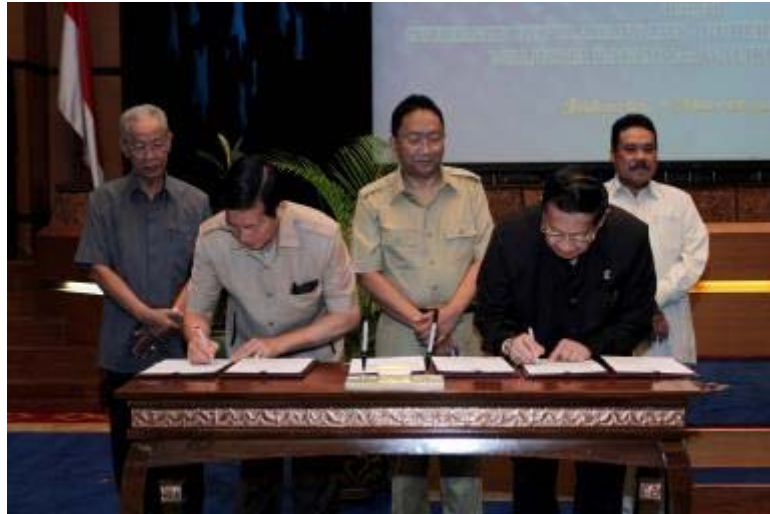


Concept of NAMA SUTRI





Memorandum of Understanding with pilot cities



- MoU between the Ministry of Transportation-provinces-pilot cities was undertaken on March 2013
- Serve as a legal framework
- Cities involved: Medan – Batam – Manado

Examples of Mitigation Actions

Bogor: Pedestrian Programme to improve connectivity and access between railway station, bus and minibus-stops, the central business district

- Sidewalks and bicycle lanes
- pedestrian traffic lights
- pedestrian shelters
- Bicycle parking facilities

Solo: ‘Park & ride’ and off-street parking facilities to strengthen the bus system

- reallocation of road space from on-street parking into dedicated bus lanes
- The ‘park and ride’ facilities

Manado: Public transport and TDM

- Formalization of Public Transport System
- Rejuvenation of the Public Transport Fleet
- Parking Management (Pricing and On-Street to Off-Street Policy)
- Vehicle Restrictions in City Center



Transport Day
2013 - Warsaw

Summary and Outlook

- NAMA Submission has increased visibility and awareness (domestically and internationally)
- Positive response from NAMA Facility to support implementation

Next steps:

1. Discussion of opportunities to include a Financial Support Component in the NAMA Concept (KfW as potential Partner for Implementation)
2. Data Collection to improve input for MRV
3. Studies in Pilot Cities to develop bankable projects and estimate mitigation impact





THANK YOU

Wendy Aritenang
Ministry of Transportation Indonesia

